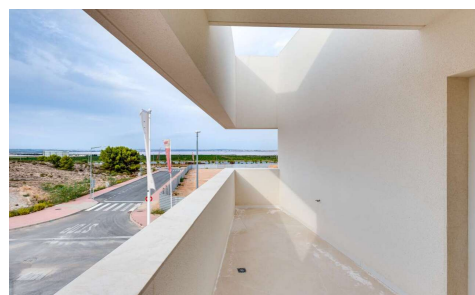
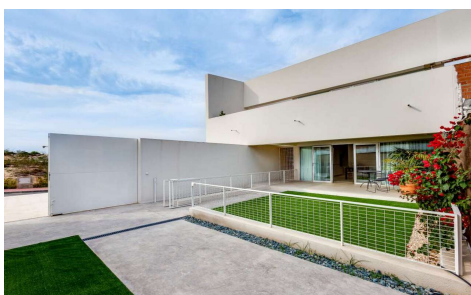
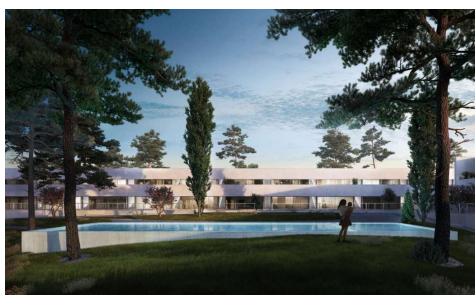


ES152586



Apartment in Torrevieja

€ 229,000



2



2


 72m²

 72m²


N/A

The Residential is formed by three blocks of two heights, of extremely horizontal proportions, implanted respecting the original topography of the plot favoring the distant views towards the salt flats of Torrevieja. In this way, three 'platforms' are generated at different levels that are connected by gentle slope roads that run through the interior of the urbanization. The architecture ... (Ask for More Details!)